

# 5.0

## Key Issues and Drivers Influencing the Future Planning of Open Space and Recreation Facilities

A number of key issues and themes emerged from the assessment of the current provision of open space and recreation facilities within the City of Sydney (refer Volume 3 – Research & Analysis) which have informed and been the basis for the strategy development process.

This section provides a high-level summary of the critical issues, findings and needs for open space and recreation facilities in City of Sydney.

### 1.0 Population and Density

#### 1.1 More Residents

The City's increasing **resident** population and density will result in more **use and capacity pressures** on all levels of the open space recreation facility network, particularly the **larger parks** that offer opportunities for active sport.

**The majority of population growth will be accommodated** in various urban renewal areas. This trend will continue over the next 10-15 years.

The planning of **urban renewal areas** will provide opportunities to increase the open space and recreation facility network provision and provide linkages to the established open space network.

#### 1.2 More Workers and Visitors

In the **City Centre** and other concentrations of **workforce population** and visitors the quality of public spaces to allow people to lunch sit and socialise as well as provision of larger spaces for lunch time sport and exercise needs to be an important consideration.

#### 1.3 Increasing Density

Open space provision will be critical to the **liveability** of higher density urban areas by supporting community well-being, physical activity, social interaction, and a sense of space within an otherwise intensive built environment.

#### 1.4 Living

The acceptance for high density housing in order to live close to the city centre and **lone person households** places importance on the distribution of the open space network to ensure people have convenient access to a park that serves as a "backyard" and facilitates social interaction and recreation opportunities. Open space planning is an important component of the liveability and quality of high density developments.

#### Now 2016

Over 200,000 residents

#### Future 2036

280,964 residents

Expected additional population growth in **Central to Eveleigh, Bays Precinct and Parramatta Road** will exceed City of Sydney growth targets

#### 437,727 workers in LGA.

2012 City of Sydney Floor Space and Employment Survey

Workforce to **increase by 84,000** people by 2030

#### Density - City Wide

##### Now 2016

8,068 people/km<sup>2</sup>

##### Future 2036

10,764 people/km<sup>2</sup>

##### Green Square Urban Renewal Area 2031

22,000 people/km<sup>2</sup>

**74.5%** Live in High Density Accommodation

**40%** Lone Person Households

### 1.5 Demographics

The age structure profiles increasing in the City of **families with young children, young adults, and older people** are expected to be heavy users of open space network. The City is also a very **cosmopolitan community**.

The open space network needs to be flexible and provide a diverse offer of recreational, social, cultural and creative activities and facilities to cater for various age, cultural and income groups.

**50.9%** of the City population was born overseas  
(2011 census)

### 2.0 Recreation Trends

Popularity and continuing growth of individual fitness, lifestyle sports such as skating and activities particularly walking and aerobics. With **walking** being consistently popular across a broad spectrum of user groups, this highlights the importance of park paths as well as streets as a venue for recreational walking as well and a safe link to parks.

**Recreational cycling** is also increasing, placing the need for safe cycle routes for all ages.

**19.2%** people **walk** for recreation and exercise

### 3.0 Infrastructure Drivers

Major infrastructure projects planned for delivery over the next 5-15 years will result in potential opportunities or impacts on the open space network (refer Volume 2, Section 4.4). These include:

- **WestConnex**
- **South Eastern Light Rail**
- **Sydney Metro City and Southwest**

**George Street light rail** transformation will be a catalyst for the renewal of many City Centre spaces

### 4.0 Environmental Drivers

Meeting the **City's environmental targets** and planning for climate change will require infrastructure upgrades and management practices to improve water and energy use.

**Climate change mitigation** and adaptation need to be considered in developing and managing the open space network.

**Biodiversity loss** can also be addressed through appropriate habitat planting and bush regeneration.

**Environmental Target**  
**Mains water consumption**  
Reduction to 10% below 2006 levels by 2030

### 5.0 Open Space Provision

#### 5.1 Benchmarks

This Study has referenced the State Government's **Recreation and Open Space Planning Guidelines for Local Government**. (Department of Planning 2010) default standards for open space planning in NSW as a means to assess provision and identify shortfalls and gaps. (Appendix 2 page 135).

As stated in these guidelines additional criteria beyond open space area provision such as population/ density and demographic profile, open space distribution, barriers, size, connectivity, and quality of visitor experience also need to be considered to ensure local open space provision and recreation needs are identified.

Default standards include **9% of site area for local and district** level open space and **15% of site area for regional** open space provision.

#### 5.2 Provision

When the City's projected population for the coming years is compared with the level of current provision and an allowance is made for the projected planned open space provision that Council is currently undertaking or planning, the ratios of population to open space will decrease.

**More open space is required through planned dedications and an open space acquisition strategy** in order to meet the growing demand.

The limited amount of space available means that all open spaces have to be **flexible and multi-purpose** to cater for a wide range of needs.

**2016**  
City Open Space **9.31m<sup>2</sup>** per resident  
Total open space **18.3m<sup>2</sup>** per resident  
**2036**  
City Open Space **7.4m<sup>2</sup>** per resident  
Total open space **14.4m<sup>2</sup>** per resident

## 5.3 Land Availability

Competing demands for land that might be suitable for open space acquisition.

## 5.4 District Provision

Open space outside the City boundary and at a **broader planning district level** plays an important role to overall opportunities for people to access quality and diverse open space and recreation opportunities.

Planning aligned to the Greater Sydney Commission Planning Districts is required to co-ordinate open space and recreation planning to avoid double up of recreation facilities and ensuring a regional pedestrian and cycle network between open space and recreation facilities.

## 5.5 Open Space Size

The majority of open spaces in the City are small which limit the range and diversity of facilities able to be accommodated.

Undersupply of larger open space will result in heavy use pressures to cater for diverse range of users.

**Acquisition of larger sites** to facilitate more diverse recreation activities is required including active sport.

## 5.6 Open Space Distribution Gaps

Generally across the City of Sydney residents have good access to a local / neighbourhood parks, however open space distribution gaps exist in Alexandria, Camperdown and Darlinghurst.

Gaps in local park provision require acquisition or improved access.

## 5.7 Barriers

Major barriers identified include Alexandra Canal, railway corridor, sandstone escarpments, land ownership restrictions and busy Roads and Maritime Services (RMS) roads.

## 5.8 Linkages

Key to creating open space linkages is the City's **Liveable Green Network** and at a wider regional level the State Governments **Sydney Green Grid**. These projects will make walking and cycling a viable option to access the open space and recreation network as well be part of a greater recreation / fitness network.

## 5.9 Open Space Access

At the individual park level, park layout, design and maintenance practices determine the accessibility and enjoyment of the park by all people. **Facilities and amenities should not only be accessible but should support inclusive social participation.**

## 5.10 Open Space Quality

The City of Sydney has undertaken a **major capital works program** across its open space network that has resulted in substantial improvements and **increase in the recreational capacity** and quality of the parks to better meet the growing and changing community demand.

Qualitative improvements will continue to be central considerations with significant increases in capacity able to be achieved through efficiencies in better planning, design and management of the existing network.

Escalated land values will mean less land area acquisition achievable with available funding

The City has approximately **214 ha of open space** adjacent or near walking distance from its boundaries

**72% City parks are less than 3,000m<sup>2</sup> in area**

**All residents should be within a 400m walk to local park**

**Urban Renewal** areas provide opportunity to address barriers and improve connectivity with new streets and connections

**Linkages** provide the opportunity to expand the population catchment for park and recreation facilities

**\$270 million** Capital Works Expenditure since 2004.

**Over \$400 million** have been allocated to the parks and recreation facilities in the City's 10 Year Works Program.

## 6.0 Maintenance and Park Management

Effective park maintenance and management is essential to maximise the recreational, environmental, and social benefits of the network as well as to ensure a project performs to the design intention.

Parks are being used more intensively bringing maintenance and programming challenges.

**Over \$9 million** spent annually maintaining the City network

### 6.1 Asset Management

Capital works program has resulted in more complex infrastructure to maintain. Forward planning and budgeting required to ensure network is maintained to expected service levels and that forward planning includes opportunities for renewal to respond to identified recreation trends.

Specialist maintenance contracts developed for water features, trees, playgrounds and water reuse facilities

## 7.0 Recreation Facilities and Public Space Use

### 7.1 Sports Fields

There is very little capacity across all outdoor sporting fields to absorb not only the current demand for field sports, but also the expected future demand.

The Sports Facility Demand Study recommends an additional 20 sports fields by 2031. This provision will only be possible through the use of synthetic fields to increase current sports field capacity, partnerships with other sports field providers and allowing some areas of passive open space to be converted to active sports fields.

A district approach is also required to sports field planning and management.

**Opportunity for Partnerships** with schools and other agencies to increase overall provision and community access to sporting fields.

**Capacity measures** such as synthetic surfaces will add additional hours rather than hectares to the network.

### 7.2 Aquatic Facilities and Amenity

City well provided with aquatic facilities. New Green Square facility will deliver good distribution for southern part of the LGA.

**Programming** must be used to emphasise differences between pools, highlight different strengths to maximise use rather than compete with each other.

**Ongoing asset management planning and works program** to ensure all facilities are running at optimal capacity and respond to recreational trends.

#### 5 City Aquatic Facilities

New facility at **Green Square** under planning

### 7.3 Outdoor Court Spaces

Recreation demand for multi-purpose court space for informal / casual use by young people is expected to increase with population growth.

**The Sports Facilities Demand Study 2016** recommends around **17-18 multi-purpose outdoor courts** will be required **by 2031**

### 7.4 Indoor Courts and Recreation

There is a continuing trend for court sports to move **indoors**. Sports such as futsal and basketball are becoming increasingly provided indoors.

**The Sports Facilities Demand Study 2016** recommends a total of around **11 indoor sports courts** should be provided **by 2031**

### 7.5 Playgrounds

Need to provide a diversity of age appropriate play environments for children, youth and young adults.

Children's play opportunities in the **City Centre** need to be increased.

Playground provision needs to extend beyond traditional play equipment and include nature and exploration play experiences.

Playground experiences need to be designed to be accessible and inclusive to meet the needs of children with a range of abilities.

The City of Sydney has **90 playgrounds** under its care, control and management

## 7.6 Skate Facilities and Youth Recreation

Skating is a popular sport and recreation activity for youth and young adults, however informal skate activities in public spaces is causing damage in some localities.

## 7.7 Companion Animals

Dog walking is a popular recreational and social activity. Need to continue to provide amenities to facilitate and manage this activity including off leash parks.

Changes to strata laws allowing pet ownership in some developments increase need for amenities in high density areas.

## 7.8 City Centre Recreation

Public domain quality of urban spaces needs to provide outdoor opportunities for workers and visitors to eat lunch, and socialise.

Lunch time field sport opportunities such as touch football are under pressure with Domain parklands at over capacity to accommodate demand.

With increased City Centre residential density city spaces are also important community spaces for many people.

## 7.9 Events

Increasing demand for high profile public spaces to accommodate events. There is also increasing demand for local and neighbourhood spaces to accommodate smaller scale community run events and projects.

Need to ensure events are supported by appropriate permanent and temporary infrastructure and practices to ensure sustainable management and protection of public open space values.

## 7.10 Other Facilities

Facilities that do not have large space needs are effective adding to the recreation diversity of the network.

These include:

- Ping pong
- Outdoor gyms
- Circuit Walking Loops
- Community Gardens

## 7.11 District Planning

A sub regional approach to open space and recreation facility planning is required. The shortage of available land, high use of current sports grounds and continuing pressure for more and better facilities cannot be met by one council alone.

An integrated "whole of region" approach is required to strategically identify, plan, develop and manage opportunities for recreation facilities that met demands of many users as possible.

There is high demand for the regions major parks with Royal Botanic Gardens, Centennial Parklands needing to develop strategies to accommodate increased use pressures.

Young people need attractive places to meet and interact socially or around recreation activities

**Over 18,000 dogs** reside in the City of Sydney

39% survey respondents visit Sydney Park to exercise their dog.

*Benchmark Park User Satisfaction Survey Program Feb-May 2013*

**Gehl Architects Public Spaces Public Life 2007** highlighted the need to improve City Centre public spaces to encourage use and activation

Over **700 events** held in the City's open space network annually

For future park capital works projects assess the need for a range of recreation amenities that will appeal to a range of age groups and cultural backgrounds

Need to plan sport at a **Central District** as well as at a local level. Adjoining local government and State Government need to work together to better understand recreation needs, avoid duplication and achieve more targeted outcomes.



# 6.0

## The Strategy

# 6.1

## Strategy Directions

From issues raised and research conducted (refer Volume 3 and 4), the City of Sydney Open Space, Sport & Recreation Needs Study has developed the following strategic directions:

### **1. More Open Space for a Growing Population**

Open space acquisition to address community demand and needs

### **2. Better Parks, Sport and Recreation Facilities**

Improving the quality and capacity of open space, sport and recreation facilities

### **3. Improve the Provision and Diversity of Sport and Recreation Facilities**

Providing an appropriate range and distribution of recreational and sporting opportunities

### **4. Access to Recreation in the City will be Inclusive and Accessible for All**

Providing barrier free opportunities for all of the community to use and enjoy our parks, sport and recreation facilities

### **5. Linking the Network**

Achieving a linked open space, sport and recreation facility network

### **6. Involving the Community**

Facilitate and encourage participation in open space, sport and recreation facility development and use

### **7. Recreation will be Environmentally Sustainable**

Contributing to the City and Local Government Area's environmental targets

### **8. Looking After Our Parks, Sport and Recreation Facilities**

Efficient and effective planning, management and maintenance of our resources

### **9. Beyond the Boundary**

District Open Space, Sport and Recreational Planning and Co-ordination



# 6.2

## Strategy Action Plan

Under the nine strategic directions, a number of recommendations and actions have been provided which collectively contribute to the successful implementation of outcomes.

All Strategies and Actions have been allocated the following characteristics to assist with implementation:

- Links to any existing reference documents, including Project Descriptions that provide planning and development directions for specific park and recreation facility projects (See Section 6.4).
- A priority for implementation, where:
  1. **Underway / Ongoing**
  2. **Short-term:** 1-5 years
  3. **Medium term:** 6-10 years
  4. **Long term:** 11-15 years

Important Notes:

*The Implementation Plan includes proposed recommendations and directions for public open space and recreation facilities controlled by the City of Sydney and a range of other organisations. Assets controlled by other organisations have been included in the scope of this Study because they provide important recreation amenity for residents, workers and visitors, as well as links to and from adjoining local government areas.*

*It is noted, however, that the City has no control over these sites and any strategic directions that implicate them will ultimately need to be determined by the relevant managing authority.*

# 1.0 More Open Space For a Growing Population

## Open space acquisition to address community demand and needs

The City will aim to provide equitable distribution and access to park and recreational facilities.

The assessment of the quantity and distribution of current open space provision shows that City is deficient in local open space for some locations and has an overall shortfall of larger open space to facilitate active recreation and sport. Increase in provision can be achieved by either direct acquisitions, land dedications arising out of the development approval process, partnerships with other agencies, or transfer of land by State Government agencies for care control and management as open space.

It is recognised that there is limited opportunity to dramatically increase the quantity of available open space to keep pace with anticipated population growth. As well as providing additional open space where required, the City's direction will be to increase the quality, diversity, usability capacity, and accessibility of existing open space. (Refer Strategic Directions 2.0, 3.0, 4.0 & 5.0).

Performance criteria will be used to assess the merit of land acquisition opportunities to ensure provision of quality usable open space.

No.	Directions	Actions/ Project Initiatives	Time-frame	References
1.1	<b>Open Space Delivery Plan</b>	Prepare <b>Open Space Delivery Plan</b> that is coordinated with the City's Contributions Plan and sets priorities for open space acquisitions.	Underway	Draft City's Contributions Plan Open Space Delivery Plan (Volume 2)
1.2	<b>Ensure that open space acquired through development process is suitable for its intended purpose.</b>	Assess open space acquisition and dedication opportunities based on recommended <b>Open Space Acquisition Land Capability Guidelines</b> (refer Volume 2).	Short	Open Space Delivery Plan (Volume 2)
1.3	<b>Open space delivery plan to prioritise the provision of open space to accommodate field sports.</b>	Identify and pursue opportunities to increase open space provision for active sport in areas identified in the Open Space Delivery Plan Volume 2	Short-Long	Open Space Delivery Plan (Volume 2)
1.4	<b>Provide accessible local / neighbourhood parks within 400m walking distance of all residents.</b>	Identify and pursue opportunities to increase local open space provision in areas of high priority as identified in the <b>Open Space Delivery Plan</b> (refer Volume 2).  Open space dedications to ensure accessible local parks for urban renewal areas.	Short-Long	Draft S.94 Plan Open Space Delivery Plan (Volume 2)
1.5	<b>Acquire / seek dedications to open space that provides open space linkages</b>	Identified opportunities include: - <b>Alexandra Canal</b> and Tributaries set back dedications - Sydney Water - Euston to Bourke St easement	Medium	Open Space Delivery Plan (Volume 2)
1.6	<b>Urban Renewal Areas</b> Ensure urban renewal master plans provide quality open space and recreation facility provision to accommodate future population growth and recreation needs.	Assessment of areas currently subject to planning by State Government include: - Barangaroo Central; - Central to Eveleigh; - Bays Precinct; - Parramatta Road.  Open space provision to be consistent with open space acquisition criteria.  (note: all these areas are in State Government control)	Short-Long	Open Space Delivery Plan (Volume 2)
1.7	<b>Extend size of existing Parks</b> Pursue acquisition opportunities to increase size and capacity of existing parks for sport and recreation	<b>Acquisition Plan</b> to identify opportunities to acquire land adjacent to existing parks	Short-Medium	Open Space Delivery Plan (Volume 2)
		<b>The Crescent</b> (Johnston Creek Parklands) properties demolition to extend the Glebe Foreshore Parklands	Medium	
		Investigate feasibility of extending the area of <b>Alexandria Park</b> through redesign of Park Street. <i>(This would provide improved connection to Alexandria Park Community School, if access becomes available).</i>	Medium	
		<b>Sydney Park</b> – investigate feasibility of removing Euston Road Depot buildings to expand active sport precinct of the Park	Long	

## 1.0 More Open Space For a Growing Population (Continued)

No.	Directions	Actions/ Project Initiatives	Time-frame	References
1.8	<b>Improve provision of City Centre public spaces to allow people to congregate, socialise and enjoy public life.</b>	Continue acquisition and feasibility assessment to develop a new <b>Town Hall Square</b>	Medium	Open Space Delivery Plan (Volume 2)
		Delivery of public space through planning controls in the <b>Alfred, Pitt, Dalley</b> and <b>George Street</b> block.	Medium	
1.9	<b>Optimisation – making more of the existing open space resource</b>	<p>Advocate and rethink existing open space use / function to increase accessibility and provision:</p> <p><b>Moore Park*</b></p> <p>Advocate to Centennial Parklands a review of Moore Park Golf Course to improve multi use and community access. Options could include provision of walking trails, reduction in course from 18 to 9-12 holes to free up open space for more multi use including sports fields.</p> <p>Increase recreation diversity and offer including connected walking paths, play and BBQ facilities within Moore Park.</p> <p><b>Wentworth Park*</b></p> <p>Negotiate with Wentworth Park Sports Complex for increased sporting use of infield.</p> <p>Long-term, develop additional sports fields with any redevelopment of <b>Wentworth Park</b> (following any relocation of the greyhound track).</p> <p><b>Lawrence Hargraves Reserve</b></p> <p>Masterplan development to improve access, use and activation of a currently underutilised public space.</p>	Medium-Long	Open Space Delivery Plan (Volume 2)
1.10	<b>Partnerships</b> <b>Increase open space and recreation facility provision through partnerships with other land owners.</b>	<p>Investigate community access to open space / recreation facilities not under the City's control or management.</p> <ul style="list-style-type: none"> <li>- Alexandria Park Community School;</li> <li>- Newtown Performing Arts School;</li> <li>- Plunkett St School, Woolloomooloo;</li> <li>- Glebe Secondary Public School;</li> <li>- National Indigenous Centre of Excellence;</li> <li>- PCYCs.</li> </ul>	Short-Medium	Open Space Delivery Plan (Volume 2)
		Develop clear policies and standard agreements that outline roles and responsibilities, insurance and risk management issues.	Short-Medium	
1.11	<b>Secure care and control of existing / potential open space owned by other State Government Authorities</b>	<p>Seek to gain transfer of land currently in the control of State Government for nominal consideration as a strategy to increase and protect the overall open space provision within the City.</p> <ul style="list-style-type: none"> <li>- Daniel Dawson Reserve, Alexandria (Rail Corporation NSW);</li> <li>- Marion Street Park, Redfern (Rail Corporation NSW);</li> <li>- Crown Street Reservoir Site, Surry Hills (Sydney Water);</li> <li>- Sydney Water (Euston Road to Bourke St easement).</li> </ul>	Short-Medium	Open Space Delivery Plan (Volume 2)

\* not controlled by the City

## 2.0 Better Parks, Sport and Recreation Facilities

### Improving the quality and capacity of open space, sport and recreation facilities

Quality refers to overall network provision and accessibility as well as the design, appearance, safety, maintenance and layout of individual sites.

The City is committed to providing high quality open spaces, sport and recreation facilities that encourages community use and enjoyment.

An extensive capital works program has resulted in substantial improvements in City parks and facilities over the last 10 years with many more projects planned for the next 10 years.

No.	Directions	Actions/ Project Initiatives	Time-frame	References
2.1	<b>Ongoing commitment to an Open Space, Sport and Recreation Facilities Capital Works Program</b>	10 year Capital Works Plan implementation	Ongoing	Volume 1 (Section 6.4)
2.2	<b>Enhance City Centre civic spaces and parks to promote outdoor activity and street life.</b>	Develop and implement public space projects identified in City Centre Public Domain Plans: - Chinatown and City South Public Domain Plan; - City North Public Domain Plan; - George Street Urban Design Study; - Harbour Village North; Develop public domain plans for Town Hall precinct.	Short-Medium	Volume 1 (Section 6.4)
2.3	<b>Upgrade and improvement of Local - Neighbourhood parks and other public spaces to better meet resident needs.</b>	Small Parks Capital Works Implementation program	Ongoing	Volume 1 (Section 6.4)
2.4	<b>Ensure quality planning and design open space outcomes provided by developers</b>	Prepare <b>Parks Code</b> design guidelines to ensure high quality open space outcomes are achieved in new public parks established as part of private development.	Short-Medium	-
2.5	<b>Better Park Lighting</b>	Ongoing implementation Parks Lighting Improvement program	Short-Medium	Sydney Lights Design Code 2014
2.6	<b>Playgrounds – Shade</b> Ensure playground have adequate shade use through existing mature canopy trees or shade structures	Implement playground shade structure rollout program	Short-Medium	-
2.7	<b>Better support facilities - Toilets</b> Provide safe and well maintained toilet facilities to encourage longer periods of usage of open space, sport and recreation facilities.	New / Upgraded toilet projects: <b>- Observatory Hill Park;</b> <b>- Alexandra Park;</b> <b>- Glebe Foreshore Parklands;</b> <b>- Sydney Park;</b> <b>- Selected Green Square parks</b>	Short-Medium	City Toilet Strategy 2014
2.8	<b>Better support facilities - Furniture and Signage</b>	<b>Parks Signage implementation program</b> Ensure parks signage kit has potential to include messaging for destinations within larger parks and adjoining streets that is co-ordinated with the Legible Sydney Wayfinding program. Park signage to include accessible path of travel information. <b>Park furniture palette rollout program</b>	Ongoing  Short	-
2.9	<b>Quality Benchmarking</b>	- Participate in international <b>Green Flag criteria</b> quality benchmark assessments. - Continue regular park user surveys to ascertain use levels satisfaction levels.	Ongoing	-

## 3.0 Improve the Provision and Diversity of Sport and Recreation Facilities

### Providing an appropriate range and distribution of recreational and sporting opportunities

The diverse needs for active and unstructured recreation need to be met.

The City will strive to provide an accessible and equitable distribution of different types of open space and recreation facilities in order to accommodate the needs of people of all abilities, cultures and ages both now and into the future.

The City's direction will be to develop recreation activity nodes within the larger parks that co-locate a mix of compatible and complementary sport and recreation activities that provide numerous things to do and experience.

An integrated approach to planning recreational activity nodes will create opportunities for greater social interaction, lower the proportion of trips made by car and increase the viability of the co-located facilities.

As a general principle, the multiple use of open space will be encouraged where proposed uses are safe and compatible.

No.	Directions	Actions/ Project Initiatives	Time-frame	References
<b>Recreation Activity Nodes</b>				
3.1	<p><b>District / Regional Parks</b></p> <p>Continue development of District/ Regional parks into recreation activity nodes to provide a diversity of structured and unstructured recreation opportunities at the one location</p>	<p><b>Capital Works Program Implementation</b></p> <p><b>New Parks</b> Gunyama Park - Green Square</p> <p><b>Capital Works Program Upgrades:</b> - Sydney Park – ongoing projects; - Johnston Creek Masterplan Implementation (Crescent Lands); - Perry Park; - Victoria Park; - Observatory Hill Park; - Belmore Park.</p> <p><b>Existing capital works upgrades to be considered for capital works program:</b> - Alexandria Park; - Waterloo Park / Oval.</p>	Short-Medium	Volume 1, Section 6.4
3.2	<p><b>Multi-Purpose Use as a provision principle</b></p> <p>Optimise the recreational use of existing open space through multi-using, design flexibility and allocation.</p>	Provide field and court layouts that suit a wide range of sports and codes as well as casual use that can be readily adapted to changes to sports trends and demography.	Short-Medium	Volume 4 - Sports Facilities Demand Study 2015
<b>Sportsfields</b>				
3.3	<p><b>Increase the provision of sports fields in the open space network</b></p>	<p>The <b>Sports Facilities Demand Study</b> recommends and additional 20 sports fields by 2031.</p> <p>This provision will only be possible through the use of synthetic fields to increase current sports field capacity and allowing some areas of passive open space to be converted to active sports fields. A <b>subregional approach</b> is also required to sports field planning and management.</p> <p><b>Open Space Delivery Plan</b> to prioritise acquisition of sites able to accommodate sports field recreation</p> <p><b>Planned New Provision:</b> - Gunyama Park, Green Square; - Johnston Creek Parklands - (non-standard size field); - Perry Park, Alexandria</p> <p><b>Urban Renewal Areas</b> Advocate to State Government for provision of open space to accommodate active recreation. - Barangaroo Central - Central to Eveleigh - Bays Precinct</p>	Short-Medium	Volume 2 - Open Space Delivery Plan Draft City of Sydney Contributions Plan Volume 4 - Sports Facilities Demand Study 2016

## 3.0 Improve the Provision and Diversity of Sport and Recreation Facilities (Continued)

No.	Directions	Actions/ Project Initiatives	Time-frame	References
<b>Sportsfields (Continued)</b>				
3.4	<b>Non-standard Field Provision</b>	<p>Where full size field cannot be provided, assess merit of non-standard / not to competition standard fields for training, casual active recreation purposes.</p> <p>Ensure future large open space dedications are flexible to accommodate casual active recreation.</p> <ul style="list-style-type: none"> <li>- McPherson Park, Ashmore Estate;</li> <li>- Garraway Park, Green Square;</li> <li>- Harold Park, Forest Lodge.</li> </ul> <p><b>Increase capacity of existing larger parks to accommodate casual active recreation</b></p> <p>Existing parks for assessment:</p> <ul style="list-style-type: none"> <li>- Metcalfe Park, Pyrmont*</li> <li>- Prince Alfred Park</li> <li>- Crystal Park, Waterloo</li> </ul> <p>Opportunity to develop existing level <b>Sydney Park Euston Road</b> area for active sport including multi use courts that allows netball use, synthetic pitches to allow training and mini field sports such as oz tag and mini soccer.</p>	Short-Medium	Sports Facilities Demand Study 2016
3.5	<b>Undertake capacity improvements to existing sports fields</b> Improve the amenity and carrying capacity of sports fields	<p>Continue program of improving natural playing surfaces with irrigation turf section and drainage improvements.</p> <p><b>Develop synthetic turf implementation program</b> to increase the capacity and relieve pressure on turf fields.</p> <p>Potential parks include:</p> <ul style="list-style-type: none"> <li>- Gunyama Park;</li> <li>- Perry Park;</li> <li>- Wentworth Park;</li> </ul> <p>and other fields subject to suitability.</p>	Short-Medium	Sports Facilities Demand Study 2016
3.6	<b>Increase field provision for City centre lunch time sport</b>	<b>Barangaroo – Central Precinct*</b> Advocate for provision of large open space area in Central Precinct to provide opportunity a variety of unstructured and structured recreation activities lunch time sport for city workers	Short-Medium	Sports Facilities Demand Study 2016
3.7	<b>Access to Existing Fields</b>	<p>Negotiate with <b>Wentworth Park Sports Complex*</b> for increased sporting use of infield.</p> <p>Long-term, develop additional sports fields with any redevelopment of Wentworth Park (following any relocation of the greyhound track).</p>	Short-Medium	Sports Facilities Demand Study 2016
3.8	<b>Partnerships to Increase Sports Field provision</b> Increase community access to existing open space managed by other institutions such as schools that can accommodate sports field recreation after hours or on weekends through the introduction of formal agreements.	<p>Negotiate public access to sporting fields according to the NSW Department of education Community Use of school Facilities Policy (2009, updated 2013).</p> <p>Potential school sites to approach include:</p> <ul style="list-style-type: none"> <li>- Alexandra Park Community School</li> <li>- Sydney Secondary College, Glebe</li> <li>- Newtown Performing Arts School</li> </ul> <p>Other Partnership opportunities:</p> <ul style="list-style-type: none"> <li>- Increase access to field inside Wentworth Park racing track</li> <li>- National Centre of Indigenous Excellence, Redfern.</li> </ul>	Short-Medium	Volume 2, Section 6.4
<b>Aquatic Facilities</b>				
3.9	Provide a network of outdoor and indoor aquatic and related facilities that provides a mix of facilities and programs so that the centres each have a point of difference whilst collectively complementing each other	<p>New Aquatic Centre and hydrotherapy pool at <b>Green Square – Gunyama Park</b></p> <p>Update <b>Aquatic Needs Strategy</b> to scope and program future asset management requirements and ensure network is accommodating aquatic recreation needs and trends.</p> <p>Scope / program asset renewal opportunities for Victoria Park Pool</p>	Medium	Aquatic Needs Strategy 2005

\* not controlled by the City

## 3.0 Improve the Provision and Diversity of Sport and Recreation Facilities (Continued)

No.	Directions	Actions/ Project Initiatives	Time-frame	References
<b>Events</b>				
3.10	<b>Promote use of open space network for cultural and community events, celebrations, markets, busking, meeting spaces and other events.</b>	Identify activity areas within specific parks, reserves and urban areas suitable for use for cultural and community events, markets, busking, meeting spaces and other events. Develop an <b>Outdoor Events Management Policy</b> . Support Community driven local events (e.g. community barbecues) with approval process, support and technical advice.	Short-Medium	-
<b>Play Facilities</b>				
3.11	<b>Create a quality network of play environments and facilities to meet the needs of children and carers.</b>	Provide a playground facility network to reflect local, neighbourhood, district and regional needs. Provide new District level facilities at: - Federal Park - Gunyama Park Continue small park capital works improvement program to upgrade local/ neighbourhood level play facilities. Consider provision of incidental play elements in street closures to increase available play opportunities.	Short-Medium	-
3.12	<b>Improve the status of the City of Sydney as a “Child Friendly City”</b> Provide a unique City Centre play environment that caters for all abilities, and is a destination venue for both local children and visitors to the City.	Assess feasibility for a major City Centre inclusive playspace. Investigate potential of locating facility in Cook and Phillip Park.	Medium-Long	UNICEF Innocenti Research Centre, “Child Friendly Cities” 2004  The World Health Organisation Age Friendly City Initiative
3.13	<b>Inclusive Play</b> Ensure that playgrounds are inclusive and meet the needs of all children. Every playground development to offer a choice for users with a disability to find something that gives pleasure, success and allows interaction with others.	Inclusive <b>district</b> play facility destination parks: - Federal Park Playground - Gunyama Park Playground - Pirrama Park	Short-Medium	Public Domain Access Policy
<b>Skate</b>				
3.14	<b>Skate feasibility assessments</b>	Undertake feasibility assessment to provide a skate facility located close / or within the <b>City Centre</b> <b>Bank Street Foreshore</b> - Assess feasibility of locating court/ skate facilities under Anzac Bridge co-located with passive watercraft facility.	Medium	-
3.15	<b>Provide accessible and diverse skate amenities</b> Provide a range of skate facilities that include both destination sites and a range of “skateable moments” across the open space network.	Establish new skate destination parks at: - <b>Federal Park, Glebe</b> - <b>Sydney Park</b> - <b>Mandible Street, Green Square</b>  Skateable moments to be considered at for playground projects including: - <b>Gunyama Park, Green Square</b>	Short-Medium	-
3.16	<b>Portable skate elements</b>	Assess the feasibility and suitability of using portable skate elements as temporary pop up sites for 1-4 week duration across the City such as Prince Alfred Park, Peter Forsyth Auditorium, Victoria Park, Nuffield Park, Woolloomooloo Playground.	Medium	-

## 3.0 Improve the Provision and Diversity of Sport and Recreation Facilities (Continued)

No.	Directions	Actions/ Project Initiatives	Time-frame	References
3.17	<b>Partnerships</b>	Rushcutters Bay Park – support Woollahra Council in development of skate facility in Woollahra managed side of Rushcutters Bay Park.	Medium	-
<b>Outdoor Courts</b>				
3.18	<b>Multi-Purpose Use</b>	Majority of outdoor courts should be multi-function courts with some dedicated provision for a single code suitable where a number of courts are co-located.  Provide multi-purpose courts (which require larger footprint than a basketball court) of around 38x22 metre which can accommodate a range of uses.  Mark courts for multiple sports to provide the potential to maximise use of courts for various sports.  Encourage use of full size tennis courts for junior “Hot Shots”	Short-Medium	Volume 4 - Sports Facilities Demand Study 2016
3.19	<b>Increase Provision</b>	The Sports Facilities Demand Study recommends around 17-18 additional outdoor multi-use courts and 4 tennis complexes (4 court) to 2031.  Meeting this provision will be subject to available land and compatibility with existing parks and land uses.	Short-Medium	Volume 2 – Open Space Delivery Plan  Volume 4 - Sports Facilities Demand Study 2016
3.20	<b>Planned Full Size Outdoor Court Provision</b>	Perry Park – two additional outdoor courts.  For scoping and assessment: <ul style="list-style-type: none"> <li>• Alexandria Park – expand existing tennis courts to four court facility (option could be in partnership with School)</li> </ul>	Short-Medium	Volume 4 - Sports Facilities Demand Study 2016
3.21	<b>Planned Outdoor Half Court / Practice Court Provision</b>	<ul style="list-style-type: none"> <li>• South Sydney Hospital Site</li> <li>• Garraway Park , Green Square</li> <li>• Johnstons Creek Parklands, Annandale</li> <li>• Victoria Park, Camperdown</li> </ul> Additional sites for assessment: <ul style="list-style-type: none"> <li>• Sydney Park; feasibility for full and half court provision</li> <li>• Sydney Water site 903 Bourke Street, Waterloo</li> <li>• Planning for outdoor recreation in commercial / employment areas should continue to include multi-purpose hard court facilities for lunch time and after work recreation.</li> </ul>	Short-Medium	Volume 4 - Sports Facilities Demand Study 2016
3.22	<b>Improve the provision for people to participate in tennis across the City</b>	Expand the number of courts at <b>Alexandria Park</b> to create a four court tennis/multi-use complex (retaining multi-use court)  Upgrade the Alexandria Park tennis facility building  Continue to provide rebound walls in selected parks to ensure affordable community tennis access	Medium	Volume 4 - Sports Facilities Demand Study 2016
3.23	<b>Urban Renewal</b>	Advocate to State Government for provision of sports courts for social recreation at: <ul style="list-style-type: none"> <li>• Barangaroo Central</li> <li>• Central to Eveleigh</li> <li>• Bays Precinct</li> </ul>	Medium-Long	Volume 4 - Sports Facilities Demand Study 2016
3.24	<b>Improve existing outdoor court facilities</b>  Multi-purpose facilities	Upgrade the condition of the basketball courts as recommended in the Sports Facilities Demand Study.	Short-Medium	-



### 3.0 Improve the Provision and Diversity of Sport and Recreation Facilities (Continued)

No.	Directions	Actions/ Project Initiatives	Time-frame	References
3.25	<b>Improve capacity of existing courts</b>	Improved surfacing, lighting and support amenities: <ul style="list-style-type: none"> <li>• Maybanke Centre Pyrmont (completed)</li> <li>• Peter Forsyth Auditorium</li> </ul> Assess option to install all weather fabric roof structure above sports courts at Ultimo Community Centre	Medium	Volume 4 - Sports Facilities Demand Study 2016
<b>Outdoor Courts (Continued)</b>				
3.26	<b>Partnerships</b>	Explore partnerships to provide new multi – purpose courts, with: <ul style="list-style-type: none"> <li>• Royal Botanic Gardens and Centennial Parklands,</li> <li>• Alexandria Community School,</li> <li>• Newtown High School of Performing Arts</li> <li>• National Centre of Indigenous Excellence, Redfern</li> </ul>	Short-Medium	Volume 4 - Sports Facilities Demand Study 2016
3.27	<b>Promotion / Awareness of facilities</b>	In conjunction with facility managers promote availability of tennis courts at Moore Park, Parklands Tennis Centre, Sydney University and Australian Technology Park for community hire.	Short	Volume 4 - Sports Facilities Demand Study 2016
<b>Indoor Courts and Recreation</b>				
3.28	<b>Increase Provision of Indoor Courts / Recreation</b>	The Sports Facilities Demand Study recommends that based on current population growth estimates and a 10% demand from weekday (worker) population, an additional 11 indoor sports courts should be provided by 2031. Meeting this provision will be subject to available land and compatibility with existing parks and land uses provide. Study recommends additional indoor courts for: <ul style="list-style-type: none"> <li>• Pyrmont</li> <li>• Green Square</li> <li>• Surry Hills / Darlinghurst</li> <li>• Newtown</li> </ul> Investigate feasibility of indoor sports court in <b>Wentworth Park Sporting Complex</b> in any future masterplanning of the park.		Volume 4 - Sports Facilities Demand Study 2016 Draft City of Sydney s.94 Plan Volume 2 - Open Space Delivery Plan
3.29	<b>Planned Provision</b>	Provide additional two indoor courts at <b>Perry Park</b> with capability of extending for a further two courts subject to future funding. Support <b>Centennial Parklands</b> to develop indoor sports courts in Moore Park (ES Marks / Horden Pavillion)		Volume 4 - Sports Facilities Demand Study 2016
3.30	<b>Upgrade Existing Indoor Court / Recreation Facilities</b>	Upgrade quality of Peter Forsyth Auditorium and Maybanke Centre Upgrade Cook and Phillip Park indoor court (planned by 2020) Assess option of expanding programs run by City indoor recreation centres into adjacent park space e.g. aerobic classes <ul style="list-style-type: none"> <li>• KGV Centre - Investigate and scope feasibility to increase capacity through use of roof space and outdoor areas.</li> </ul>		Volume 4 - Sports Facilities Demand Study 2016
3.31	<b>Indoor Community Spaces</b>	Ensure new City community spaces have flexibility to accommodate indoor recreation programs such as yoga, dance, martial arts. <ul style="list-style-type: none"> <li>• Harold Park Tramshed Community Space;</li> <li>• South Sydney Hospital Site, Green Square.</li> </ul>	Medium	-
<b>Walking and Cycling</b>				

## 3.0 Improve the Provision and Diversity of Sport and Recreation Facilities (Continued)

No.	Directions	Actions/ Project Initiatives	Time-frame	References
3.32	<b>Park Walking Loops in larger parks to be provided</b>	Provide pathway loops at: <ul style="list-style-type: none"> <li>• Hyde Park</li> <li>• Waterloo Park</li> <li>• Alexandra Park</li> <li>• Observatory Hill Park</li> <li>• Belmore Park</li> </ul>	Short-Medium	Volume 4, Section 6.4
<b>Walking and Cycling (Continued)</b>				
3.33	<b>Wayfinding Signage</b>	Rollout of Legible Sydney wayfinding signage	Short-Medium	Legible Sydney Implementation Plan 2013
3.34	<b>Childrens recreation cycling</b>	Sydney Park childrens cycle facility (Completed)	Short	Sydney Park Plan of Management 2014
3.35	<b>Amenities to support walking and Cycling</b>	Liveable Green Network implementation to include support amenities such as seats, bubblers, and toilets.  Greening Sydney implementation to provide tree planting for shade.	Underway	Walking Strategy 2015
3.36	<b>Lighting</b>	Footpath Lighting Implementation Plan to improve lighting amenity of footpaths and cycleways with back of pole fixtures.	Underway	Sydney Lights Design Code 2015
3.37	<b>Regional Approach</b>	Co-ordinate with State Government and neighbouring councils on implementation of the <b>Sydney Green Grid</b> to provide regional walking and cycle connections.	Medium	Plan for a Growing Sydney 2014
<b>Companion Animal Exercise</b>				
3.38	<b>Residents with companion animals will have a range of options and destinations for exercising and socialising</b>	Provide opportunities for additional off leash areas when community feedback indicates this is appropriate.  Improve facilities for companion animal exercise; <ul style="list-style-type: none"> <li>- Water points / dog bowls at off leash parks</li> </ul>	Short-Medium	CoS Companion Animal Policy 2006
<b>Personal Training</b>				
3.39	<b>Support the use of outdoor areas for outdoor fitness training</b>	Develop and implement a code for outdoor fitness training to allow access to public land for fitness trainers in harmony with other park users and to avoid damage through inappropriate use.	Short-Medium	Draft Outdoor Fitness Training Voluntary Code of Conduct 2015
<b>Passive Use Boating</b>				
3.40	Where appropriate, provide landing sites for passive craft, such as ramps, pontoons and seawall steps.	Advocate Bays Precinct planning directions for developing public boating facilities at <b>Bank Street, Pyrmont</b> to accommodate passive-use boating activities including Dragon Boat racing	Medium	-
<b>Other Facilities</b>				
3.41	Ensure equitable distribution of facilities that can be used for informal, unstructured activity and that do not require a large amount of space.	Implement <b>Outdoor Fitness Equipment Program</b> .  Consider the following new installations in larger parks to improve provision to free recreation facilities: <ul style="list-style-type: none"> <li>- Tennis rebound walls</li> <li>- Bocce courts</li> <li>- Outdoor table tennis</li> <li>- Park tables with chess boards</li> <li>- Street Libraries</li> </ul>	Short-Medium	-

## 4.0 Access to Recreation in the City will be Inclusive and Accessible for All

### Providing barrier free opportunities for all of the community to use and enjoy our parks, sport and recreation facilities

Inclusion and accessibility will be a priority. Parks, sport and recreation facilities are for all people. Facilities and open space will be designed and managed to be accessible and inclusive of all people, regardless of age, income, ability or background.

No.	Directions	Actions/ Project Initiatives	Time-frame	References
4.1	<b>Ensure equitable access to the City's open space, sport and recreation facility network</b>	Provide universal access preferably with on grade entry points, or with ramps and rails for new park upgrades. Ensure the provision of legible and clear paths of travel to all recreation and park facilities.	Short-Medium	Public Domain Access Policy (Draft under development)
		<b>Inclusive Play Opportunities</b> - Federal Park - City Centre - Sydney Park - Pirrama Park	Short-Medium	Public Domain Access Policy (Draft under development)
		<b>Accessible Toilet Facility Provision</b> New / Upgraded toilet projects: - Observatory Hill Park - Alexandra Park - Glebe Foreshore Parklands - Selected Green Square Parks	Short-Medium	Public Toilet Strategy
4.2	<b>Park furniture</b>	Accessibility considerations incorporated into park furniture design to be compliant with AS1428.1 clause 27. Ensure adequate provision of seats and rest points along walking paths.		Public Domain Access Policy (Draft under development)
4.3	<b>Information</b> Continue to improve the availability of information about parks and recreation facilities to enable people to make informed choices.	Provide clear information on the range of leisure opportunities and support infrastructure such as toilets that are available - Parks Signage Program - "My Park" App - City Web Site  Where practical and where high demand for information is likely (i.e. Non English / other languages) Provide information to CALD communities in relevant languages and formats.	Short	Public Domain Access Policy (Draft under development)
		- Investigate feasibility of providing <b>Wifi hot spots</b> in key city centre spaces. - Investigate merit of "ibeacon" technology to improve accessibility of park facilities.	Medium	Public Domain Access Policy (Draft under development)
4.4	<b>Improve provision of wayfinding information to allow people to locate parks, sport and recreation facilities.</b>	Legible Sydney Wayfinding Signage Implementation Program	Short-Medium	Legible Sydney Design Manual 2013
4.5	<b>Safety</b> <b>Ensure public spaces are designed and maintained with respect to principles of community safety and where appropriate encourage night time use and activation.</b>	Park lighting improvement program implementation.	Short-Medium	Sydney Lights Design Code 2015
4.6	<b>User Charge Fees</b>	Maintain a consistent and equitable fees and charges policy for use of Council's recreation facilities.  Ensure there is a range of well-distributed community recreation facilities (free access) across the City, such as court spaces for basketball / netball.	Short	City of Sydney Fees and Charges

## 4.0 Access to Recreation in the City will be Inclusive and Accessible for All (Continued)

No.	Directions	Actions/ Project Initiatives	Time-frame	References
<b>Target Groups</b>				
4.7	<b>Parks and recreational facilities need to be designed to be accessible and enjoyable for all ages.</b> Refer below on target groups and actions:			
(a)	<b>Aboriginal and Torres Strait Islander Community</b>	Provide acknowledgement of Country on park signage. Undertake consultation with the Aboriginal & Torres Strait Islander Advisory Panel and community on: - Recreation / Sport needs and issues; - Economic opportunities available within the open space network; - The open space network as a venue to celebrate Aboriginal culture and heritage.	Underway	Towards 2030 - Eora Journey
(b)	<b>Children</b>	Refer to actions 3.11, 3.12 and 3.13.	Short-Medium	Draft Social Sustainability Policy
(c)	<b>Older People</b> Ensure there is a range of facilities and spaces suitable for older persons and which can be easily accessed	Provide more circuit-style walking paths within parks. Continue to support the community garden network across the City. Implement Wellness Walks as part of the Greening Streets Program. Fitness equipment suitable for seniors. Support potential greening volunteering opportunities.	Short-Medium	Draft Social Sustainability Policy The World Health Organisation Age Friendly City Initiative
(d)	<b>People with Disability</b>	Refer to Direction 4.1.	-	Public Domain Access Policy (Draft under development)
(e)	<b>Youth</b> Continue to improve the range, distribution and diversity of recreation facilities and spaces for young people including spaces to meet and socialise	Continue to maintain the existing youth facilities accommodating youth recreation at the following sites: - Millers Point Community Centre - Juanita Nielson Centre - Redfern Community Centre - Waterloo Oval (youth centre) - Peter Forsyth Auditorium (indoor court) - Maybanke Centre	Short-Medium	Draft Social Sustainability Policy
		Indoor Recreation Programmed improvements / development of indoor recreation facilities, to consider youth recreation needs. - Perry Park Indoor Court Facilities; - Maybanke Centre, Pyrmont; - Peter Forsyth Centre, Glebe.	Medium	Draft Social Sustainability Policy
		Youth Sport and Recreation Programs City to continue to support youth sport and recreation programs particularly for disadvantaged groups.	Medium	Draft Social Sustainability Policy
(f)	Provide “youth-friendly” precincts with facilities that could include “hang out” spaces, multi-purpose outdoor courts and skate facilities.	Future youth friendly recreation facilities at: - Gunyama Park; - Green Square South Sydney Hospital site; - Mandible Park; - Federal Park; - Belmore Park; - Sydney Park; - Prince Alfred Park.	Short-Medium	Draft Social Sustainability Policy
(g)	<b>Culturally and Linguistically Diverse People (CALD)</b>	Ensure district and regional level parks provide infrastructure for social get togethers including BBQ, picnic tables and support amenities, such as toilets.	Short-Medium	Draft Social Sustainability Policy
		Consider provision of recreation facilities that might appeal to various CALD groups - Bocce courts - Badminton - Chessboards on tables - Outdoor ping pong	Short-Medium	Draft Social Sustainability Policy

## 5.0 Linking the Network

### Achieving a linked open space, sport and recreation facility network

A well connected open space, sport and recreation facility network provides greater opportunity to access a diverse range of recreation opportunities, improve visual amenity and promote the creation of wildlife/ biodiversity corridors.

Collaboration between the State Government Agencies and neighbouring councils is imperative to achieve a regional network that maximises use, enhance opportunities and choice to participate in recreation, and encourages integration between neighbourhoods.

No.	Directions	Actions/ Project Initiatives	Time-frame	References
5.1	<p><b>Form open space links between areas of significant parkland.</b></p> <p>The purpose of linkage provision is access and does not negate the need to provide open space and recreational opportunities when assessing overall provision.</p>	<p>Address gaps in the existing network to provide continuous open space links.</p> <p>Key strategic open space links being planned and developed include:</p> <ul style="list-style-type: none"> <li>- Harbour Foreshore</li> <li>- Bays Precinct- Bank Street foreshore access around Pyrmont to Glebe Parklands.</li> <li>- Central to Eveleigh Corridor</li> <li>- Alexandria Canal Corridor.</li> <li>- City to Botany Bay</li> </ul>	Medium	<p>Sustainable Sydney 2030</p> <p>Liveable Green Network Masterplan</p> <p>Sydney Green Grid</p>
5.2	<p><b>Provide improved connections between open space and surrounding neighbourhoods.</b></p>	<p>Key connections for feasibility assessment include:</p> <ul style="list-style-type: none"> <li>- Sydney Park to Alexandria Canal.</li> <li>- Prince Alfred Park to Chippendale.</li> <li>- Victoria Park to Chippendale.</li> <li>- Wentworth Park to Central Pyrmont / Ultimo.</li> <li>- 20 Bank Street link, Pyrmont</li> </ul>	Medium	-
5.3	<p><b>Liveable Green Network</b></p> <p>Create green street links between major open space areas for pedestrian and cycle use.</p>	<p><b>Liveable Green Network Implementation Plan</b></p> <p>Improve streetscapes which provide direct pedestrian links to open space, sport and recreation facility destinations</p>	Underway	<p>Greening Sydney Plan</p> <p>Liveable Green Network Masterplan 2011</p>
5.4	<p><b>Sydney Green Grid</b></p> <p>Develop cross-boundary open space linkages beyond the City of Sydney boundaries</p>	<p>Collaborate with Department of Planning on Green Grid Project to ensure co-ordination of open space connections</p>	Medium	<p>Liveable Green Network Masterplan 2011</p> <p>Sydney Green Grid Plan for a Growing Sydney 2014</p>

## 6.0 Involving the Community

### Facilitate and encourage participation in open space, sport and recreation facility development and use

The open space, sport and recreation facilities network belongs to the community.

If public open space is to satisfy community needs then it makes sense to actively involve the potential users in its design, to make the community aware of the recreation opportunities available, and to generally encourage the use of our open space network.

Involvement of the community in the planning for and design of open space, sport and recreation facilities in their neighbourhoods will ensure that outcomes better reflects various needs and differences.

Physical inactivity is identified as a major cause of disease in Australia. State and Federal Governments have responded with campaigns for Australians to become more active and healthy in order to reduce the incidence of obesity, type 2 diabetes and heart disease.

Parks and recreation facilities contribute significantly in addressing this issue by providing venues for people to participate in physical recreation and sport.

The City has an important role to play in delivering this “get active” message by encouraging community recreation and sport through the provision of quality open space, facilities, services and programs.

No.	Directions	Actions/ Project Initiatives	Time-frame	References
<b>Consultation</b>				
6.1	<b>Effective public consultation processes on the development and use of open space, sport and recreation facilities</b>	Continue consultation processes for open space, sport and recreation facility projects to ensure outcomes reflect various needs and uses.  Develop innovative and meaningful consultation processes to engage children and young people to influence open space design and use.	Underway	Sydney Your Say
<b>Parks Interpretation and Information</b>				
6.2	Enhance community enjoyment and appreciation of parks through interpretation	Continue parks interpretation strategy that addresses: - Appropriate media options including City website; - In-park signage; - Aboriginal significance; - Public art; - Community involvement; - Ecological interpretation signage.	Underway	Draft Social Sustainability Strategy
6.3	<b>Promote community health, fitness and wellbeing</b>	Continue communications strategy to provide information to community regarding open space, sport and recreation facilities and programs.	Underway	-
<b>Events</b>				
6.4	<b>Support and encourage the use of parks for community and cultural events, celebrations, and community interaction.</b>	Continue to promote City community events in parks.  Continue to conduct and promote “Good Neighbours BBQs” organised by Safe City Unit.  Continue to conduct / facilitate temporary art installation projects within the open space network.	Underway	-
<b>Promote community involvement in the management of parks</b>				
6.5	<b>Community Gardens</b>	Continue support for community gardens programs and groups.	Underway	Community Gardens Policy
6.6	<b>City Farm</b>	Continue implementation of Sydney Park City Farm	Medium	City Farm Feasibility Study 2010
6.7	<b>Volunteers</b>	Continue to support volunteer groups undertaking bush regeneration and community gardening in the City’s open space network.	Short	-
6.8	<b>Parks / Public Spaces as a focal point for community meeting and social interaction</b>	Continue programs such as flexible seating, outdoor reading rooms, exercise classes etc to energise spaces for social interaction.	Underway	-

## 7.0 Recreation will be Environmentally Sustainable

### Contributing to the City and Local Government Area's environmental targets

The City's open space network provides more than just visual amenity or settings for recreation. It is an essential provider of bio-physical processes in an urban environment. The City is committed to fostering a sustainable and liveable city. This means in our stewardship of our parks and recreation facilities the City will maintain and increase biodiversity and health of ecosystems, and conserve natural resources.

To meet the City's **environmental targets**, infrastructure to increase the environmental performance and sustainability of the network will be an ongoing feature of the City's Capital Works Program.

No.	Directions	Actions/ Project Initiatives	Time-frame	References
<b>Energy and Water</b>				
7.1	<b>City parks and recreation operations will demonstrate Australian leadership in energy and water efficiency, recycled water, low carbon and renewable energy</b>	<p>Continue the principles of water sensitive urban design in open space development and redevelopment.</p> <p>Key project initiatives for sustainable water management at the following sites:</p> <ul style="list-style-type: none"> <li>- Harold Park</li> <li>- Hyde Park</li> <li>- Sydney Park</li> <li>- Drying Green Park</li> <li>- Gunyama Park</li> </ul>	Medium	City of Sydney Water Savings Action Plan
		<p>Key energy efficiency projects:</p> <ul style="list-style-type: none"> <li>- Park LED Lighting Program</li> </ul> <p>City Aquatic Facilities:</p> <ul style="list-style-type: none"> <li>- Renewable and Low Carbon energy supply</li> </ul>	Underway	Energy Efficiency Master Plan 2015 - 2030
<b>Biodiversity</b>				
7.2	<b>Increase biodiversity by provision of and providing endemic species across the open space network for food habitat creation.</b>	<p>Plant indigenous species in open space areas, where possible and practical, unless there is an established park / heritage landscape character, a particular functional need, or a specific design feature that requires another species.</p>	Underway	Urban Ecology Strategic Action Plan Bush Restoration Management Plan
		<p>Larger parks in which City to continue / reinforce biodiversity components include:</p> <ul style="list-style-type: none"> <li>- Sydney Park</li> <li>- Glebe Foreshore Parklands (mangrove area)</li> <li>- Federal Park (salt marsh wetland)</li> <li>- Orphan School Creek Reserve</li> </ul>	Underway	Urban Ecology Strategic Action Plan
7.3	<b>Initiate partnerships to increase biodiversity along transport / utility corridors.</b>	<p>Promote and enhance endemic species planting in the following utility corridors:</p> <ul style="list-style-type: none"> <li>- Pyrmont Light Rail corridor</li> <li>- Southern Cross Drive road reserve</li> <li>- State Rail Authority Corridor</li> <li>- Sydney Water Reserves (Alexandra Canal network)</li> </ul>	Underway	Urban Ecology Strategic Action Plan
7.4	Expand biodiversity corridors beyond LGA boundary.	Collaborate with other land managers within and adjoining the City of Sydney LGA to identify potential for and create a broader network of habitat corridors within the Sydney metropolitan area.	Medium	Urban Ecology Strategic Action Plan
<b>Materials Use</b>				
7.5	Ensure lifecycle assessment principles are applied in the design and construction of open space and recreation assets	Review all major construction materials e.g. concrete, steel, timber, to develop procurement standards to minimise environmental impacts.	Medium	Sustainable Asset Management Policy
<b>Education</b>				
7.6	Promote environmental education / interpretation	<ul style="list-style-type: none"> <li>- Sydney Park City Farm</li> <li>- Community Gardens</li> </ul>	Short-Medium	Community Gardens policy 2014

## 8.0 Looking After Our Parks, Sport and Recreation Facilities

### Efficient and effective planning, management and maintenance of our resources

The City of Sydney will continue the network revitalisation with substantial capital works expenditure in the creation and improvement of parkland and facilities. It is important to consolidate this development with a commitment to the ongoing maintenance and asset management of the living and built assets so that they continue to provide community benefits into the future.

The planning, development, and management of open space, sport and recreation facilities will need to be a key focus of the City to ensure the network has the capacity and responsiveness to demand pressures and recreation trends.

No.	Directions	Actions/ Project Initiatives	Time-frame	References
8.1	<b>Continue the preparation of Plans of Management and Master Plans to provide long term strategic directions and ensure that decision-making takes a coordinated approach</b>	Prepare and update as required site specific and generic plans of management in accordance with statutory requirements  Update and revise park master plans for the following sites: - Belmore Park; - Observatory Hill Park; - Wentworth Park; - Lang Park; - Erskineville Oval / Harry Noble Reserve.	Medium	-
8.2	<b>Securing the future of open space with appropriate planning controls</b>	Identify and assess any inconsistencies between current LEP zonings and actual open space land use, and amend zoning accordingly in the City Plan.	Short-Medium	-
8.3	<b>Facility Management</b>  Improvements to facility management to increase availability of sporting facilities in the City.	- Programming of facilities to smooth out or shift peak use periods, ie. increase off-peak use; - Collaborate with schools and tertiary institutions to maximise the public use of their facilities; - Develop a regional centralised regulation and booking system for Councils, parks agencies and facility managers; - Educate sports field users to use alternate equipment (such as footwear without studs) and to rotate training on fields to reduce turf wear; - Invest in sportsfield and outdoor court lighting at underutilised sites.	Short-Medium	Volume 4 - Sports Facilities Demand Study 2016
8.4	<b>Asset Management</b>  Protection of the investment by the City in its parks and recreation facilities by the implementation of best practice asset management processes.	Continue implementation of a Total Life Cycle Asset Management System.  Continue to develop and maintain a parks asset inventory.  Continue an asset management and funding plan that ensures long term maintenance and replacement of park facilities, furniture and equipment.	Underway	-
8.5	<b>Core Service Levels</b>  Ensure best practice maintenance standards apply to all parks and reserves.	Continue implementation maintenance specification for external contracts to tailor service levels to park types and settings.  Ensure all maintenance activities are conducted with consideration of access to park and recreation facilities.	Underway	Public Domain Access Policy (Draft under development)
8.6	<b>Proactive tree management</b>  Prepare tree management plans for the City's open space network.	Ongoing development of Tree Management Plans for the City's major parks.	Underway	-
8.7	<b>Data and Knowledge Base</b>  Improve the information base upon which open space planning and recreation is undertaken through relevant research.	Ensure that the City actively participates in benchmarking programs to identify and adopt best practice park management.  Continue regular park user surveys to ascertain use levels satisfaction levels.  Monitor demographic change and trends in recreation and leisure and consider key impacts and implications to assist in planning and service provision.	Underway	-
8.8	<b>Manage event usage in open space network to ensure long-term viability of parkland is not compromised.</b>	Prepare <i>City of Sydney Outdoor Event Management Guidelines</i> that provide clear guidelines for the application and management of outdoor public events in a way in which benefits to the community are maximised whilst potential negative impacts on the park are minimised.	Underway	-



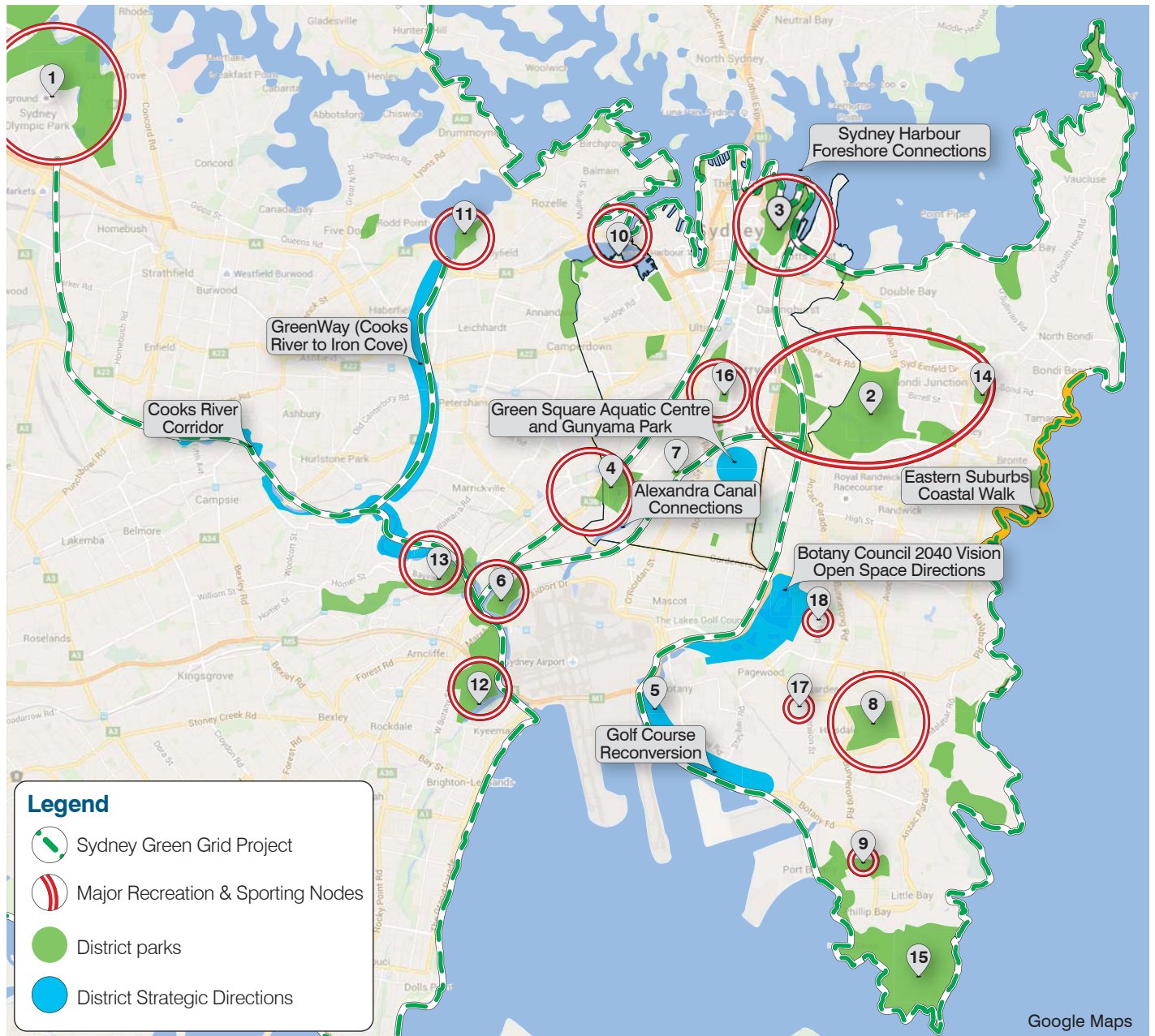
## 9.0 Beyond The Boundary

### District Open Space, Sport and Recreational Planning and Co-ordination

Planning aligned with the Greater Sydney Commission planning Districts is required to strategically identify, plan, develop and manage open space, sport and recreation opportunities.

No.	Directions	Actions/ Project Initiatives	Time-frame	References
9.1	<p><b>Effective partnerships</b> and leadership in open space, sport and recreation facility management.</p> <p>Interagency awareness of roles and capacities of various organisations to avoid duplications of facilities.</p>	<p>Ensure regular liaison and cooperative planning with the following Agencies:</p> <ul style="list-style-type: none"> <li>- Greater Sydney Commission</li> <li>- Department of Planning</li> <li>- UrbanGrowth NSW</li> <li>- Office of Sport</li> <li>- Central District Councils</li> <li>- Sydney Harbour Foreshore Authority</li> <li>- Barangaroo Delivery Authority (BDA)</li> <li>- Centennial and Moore Park Trust</li> <li>- Royal Botanic Gardens</li> <li>- Sydney University</li> </ul>	Short-Medium	-
9.2	<p><b>Promote an integrated and consistent approach to open space management</b></p>	<p>Co-ordinate with open space managers to aim for integration and alignment of regulations is desirable in ensuring people can enjoy consistency in experiences when visiting parks and recreational facilities across the Central District.</p>	Short-Medium	-
9.3	<p><b>Undertake Co-ordinated Strategic District Planning</b></p>	<p>Joint preparation of open space, sport and recreation needs strategy to consider supply at a Central District level, develop clear hierarchy of sports and recreational facilities, centralised booking systems, land acquisition requirements and partnerships to allow access and sharing of facilities, avoid duplication of facilities and shortfall in others, and co-ordinate pedestrian and cycle links to regional destinations.</p>	Short-Medium	Greater Sydney Commission - Central Planning District
9.4	<p><b>Data Collection</b></p>	<p>Good planning for recreation facilities depends on sound information. The development of an information database to allow Central District access to compatible information generated by consistent methodologies will allow for a more informative basis for sound decision making.</p>	Short-Medium	-
<b>Central District Open Space Network Opportunities</b>				
9.5	<p><b>Moore Park</b></p> <p>Advocate for Centennial Parklands to develop a Moore Park strategic masterplan to plan for increasing residential densities in the sub region.</p>	<p>Key considerations:</p> <p>Review of Moore Park Golf Course to improve multi use and community access. Options could include provision of walking trails, reduction in course from 18 to 9-12 holes to free up open space for more multi use including sports fields.</p> <p>ES Marks Field precinct and Horden Pavilion provision for indoor recreation;</p> <p>Increase recreation diversity and offer including connected walking paths, play and BBQ facilities.</p>	Medium-Long	-
9.6	<p><b>Linkages</b></p> <p>Co-ordination and implementation of pedestrian/ cycle linkages between open space, sport and recreation facilities as well as deliver a recreation asset for walking and cycling.</p>	<p><b>Sydney Green Grid Project</b></p> <p>The Sydney Green Grid identifies important regional trails across Metropolitan Sydney, many linking to the City. Of particular relevance to the City of Sydney would be:</p> <ul style="list-style-type: none"> <li>- Botany Bay to Homebush Bay and Kurnell to La Perouse - (linked to the City via the Alexandria Canal).</li> <li>- Links from City to Botany Bay;</li> <li>- Coastal Walk (linked to the City via Centennial Parklands).</li> </ul>	Short-Medium	Plan for a Growing Sydney (2014)
9.7	<p><b>Botany Bay Wetlands Open Space Corridor and Links</b></p>	<p><b>Support Botany Council 2040 Vision</b> to restore community access to Botany Wetlands with pedestrian cycle links from Gardeners Road through golf courses to Sir Joseph Banks Park, conversion of Eastlakes Golf Course to a major new park and conversion of Botany Golf Course to provide active sport facilities.</p>	Long	Botany 2040 vision (2015)
9.8	<p><b>White City</b></p>	<p>Support Woollahra Council to negotiate community access to White City open space and recreation facilities and retain a continuum of open space between Rushcutters Bay Park and Trumper Park.</p>	Short	-

## 9.0 Beyond The Boundary (Continued)



**Legend**

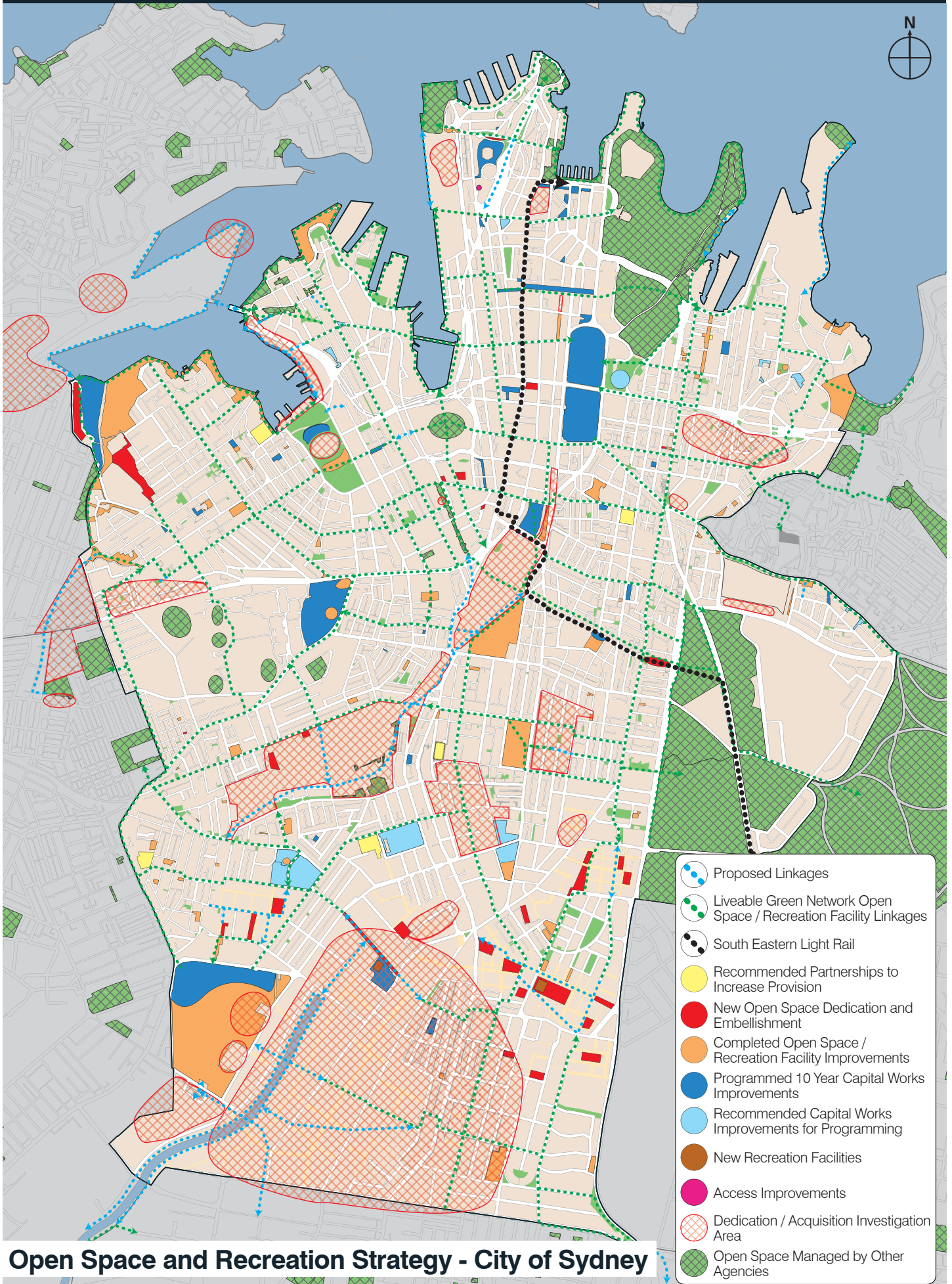
- Sydney Green Grid Project
- Major Recreation & Sporting Nodes
- District parks
- District Strategic Directions

Key		
1 Sydney Olympic Park	7 Perry Park	13 Cooks River Sportsfields
2 Centennial Parklands	8 Heffron Park Redevelopment	14 Waverley Park
3 Royal Botanic Gardens & Domain	9 Bunnerong Park	15 Botany Bay National Park
4 Sydney Park	10 Glebe Foreshore Parklands	16 Redfern Park
5 Sir Joseph Banks Park	11 Callan Park	17 Hensley Athletic and Sports Field
6 Tempe Park	12 Kyeemagh Parklands	18 The David Phillips Sports Complex

# 6.3

## Strategy Plan Mapping



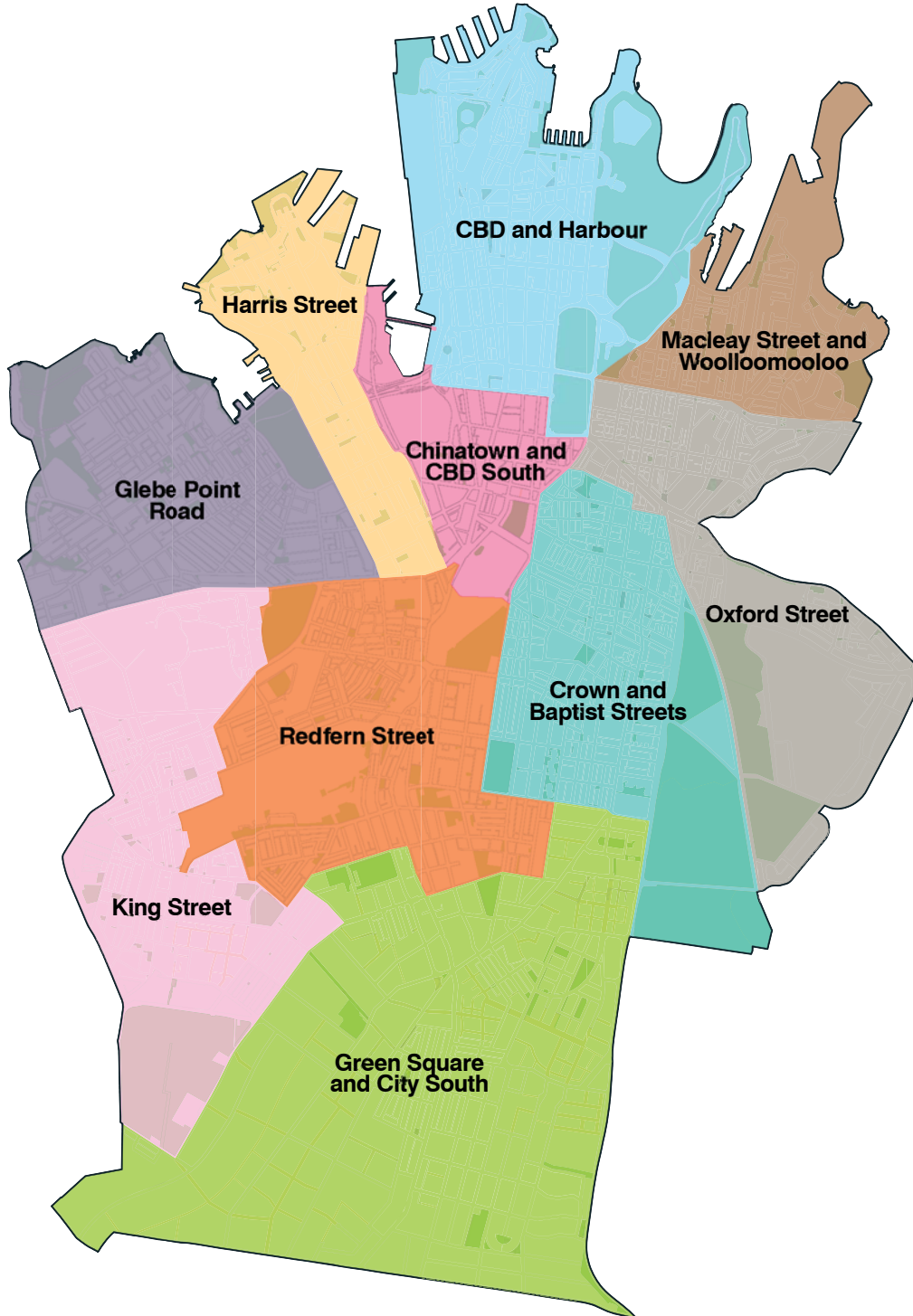


**Open Space and Recreation Strategy - City of Sydney**



## Village Precinct Mapping

The City's In Your Village precinct boundaries, as identified in Figure 8, have been used to prove mapping to identify locations of relevant action outlines as identified in section 6.2.



**CBD and Harbour**  
City Centre, Millers Point, Barangaroo

**Chinatown and CBD South**  
Haymarket, Darling Harbour

**Macleay St and Woolloomooloo**  
Potts Point, Elizabeth Bay, Rushcutters Bay, Woolloomooloo

**Oxford Street**  
Paddington, Darlinghurst, Centennial Park

**Crown and Baptist Streets**  
Surry Hills, East Redfern

**Redfern Street**  
Redfern, Chippendale, Darlington, Eveleigh, Alexandria (part), Waterloo (part)

**King Street**  
Newtown, Camperdown, Alexandria (part)

**Glebe Point Road**  
Glebe, Forest Lodge

**Harris Street**  
Pyrmont, Ultimo

**Green Square and City South**  
Zetland, Beaconsfield, Waterloo Rosebery, Alexandria (part)

Figure 8